



# TEDDER'S TECHNICAL FACTS

Spring 2008

Page 1

Hampton  
Tedder  
Regional  
Offices

**SOUTHERN CALIFORNIA**  
(909) 628-1256  
LIC. #288-589 C-10

**NEW MEXICO**  
(480) 797-3928  
LIC. #89512

**NEVADA**  
(702) 452-9200  
LIC. #39279

**ARIZONA**  
(480) 967-7765  
LIC. #146676  
Comm. A-17  
LIC. #156612  
Comm. A-11

## 2008 Is Our Golden Anniversary Come Take A Trip Down Memory Lane with Us



**The Sixties...** Hampton Tedder Sr. had an unstoppable resolve to create a successful electrical contracting business, and he did it.....



Hampton Tedder, Sr.

This Decade saw success and fast growth in Hampton's business matching the fast growth of Southern California and its electrical needs. Yes>>> Hampton was up to the challenge, no matter how daunting!!!



We often visited suppliers assuring quality & on-time delivery; From left are Hampton Jr, Tom Tamberen & Hampton Sr at Kerite Cable, a 125 yr old East Coast company that supplied cable for the Panama Canal.

**The Seventies...** Oil embargos; Jimmy Carter's fireside chats; and Hampton Tedder Electric was so busy, it couldn't catch its breath.....



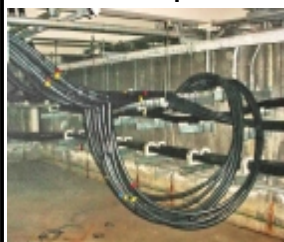
Became Founding NETA members

HTE provided HV work for Fluor in Iran, finishing just before Khomeini's uprising! After the revolution, we went back to retest all cable runs for sabotage; a scary proposition. We finished our work just before the US hostages were taken! We've been around alright!!!



Middle East business was booming and HTE was in the middle of it all.

**The Eighties...** HT's business grew; SCE used HTE more than ever; we launched HTTS and our medium voltage installation and testing services reputation grew across the LA Basin and beyond.....



Whether it was under the streets, inside building vaults, or in open switchyards, HTE was there performing all kinds of high quality installations, field repairs, and testing entire facilities, as well as select components for writing of condition assessment reports.





# TEDDER'S TECHNICAL FACTS

Spring 2008

Page 2

Hampton  
Tedder  
Regional  
Offices

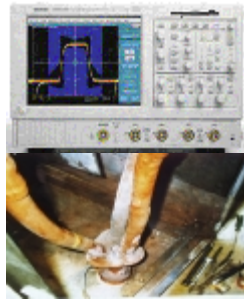
**SOUTHERN  
CALIFORNIA**  
(909) 628-1256  
LIC. #288-589 C-10

**NEW  
MEXICO**  
(480) 797-3928  
LIC. #89512

**NEVADA**  
(702) 452-9200  
LIC. #39279

**ARIZONA**  
(480) 967-7765  
LIC. #146676  
Comm. A-17  
  
LIC. #156612  
Comm. A-11

## The Nineties... Expansion of services never stopped; we began providing more complex Engineering Studies & founded a Partial Discharge



Not one to let useful technology pass us by, we rapidly expanded into PD analysis, a technology which yields condition assessment on live medium voltage equipment with no outage needed. We find sight unseen problems like the cables at the left with no cover removal. We look inside buried cables, transformers and more! We maintain many satisfied PD clients, such as Cedars-Sinai, Disney, Boeing, ARCO, Honda, SCE, GE, Raytheon, Northrop-Grumman, etc.



Technical studies service expanded, past Short Circuit, Coordination & into Arc Flash & Load Studies, Harmonics, Forensic Analysis, and more. Studies' importance rose as electrical system complexity grew.

## The 21st Century... We're sure right in there with this new century; further expanding engineering services; using ever higher-tech (and more expensive) testing equipment; introducing new partial discharge technologies; and launching two new Divisions: Overhead Division and Low Voltage Services & Maintenance Division.....

**Our new Overhead Division** spans an entire range of T&D services, including management, administration, inventory control, system evaluation, operations, distribution, transmission, construction, and distribution maintenance. For your T&D needs, think of Hampton Tedder!!



New Year's 2008, a 12kV, 1,000kVA Transformer failed at Los Osos HS; HTE quickly found a stand-in transformer in Bakersfield & used it during failed transformer's winding repair; not a small feat to accomplish!!

HTE's crew is laying a new submarine power cable involving complex splices & other repairs, returning reliable power to Platform Hogan for owner Pacific Offshore Operators.



We've grown! We've changed! Over the years, we've kept searching for and adding valuable ways to better serve our customers. From one man's dream in 1958 to what you see below; a dedicated team providing MV expertise, T&D expertise, PD Surveys, Engineering studies, and importantly, Full-member NETA testing expertise of anything electrical, from power plants to offices.



**Technical Expertise is Truly Gained by  
Being Out Serving Clients for 50 Years !!!  
Pay a visit to: [www.hamptontedder.com](http://www.hamptontedder.com)**